

Go Beyond Excellence.

||| KOCAER
STEEL



About us.

Kocael Steel, operating in the steel profile segment of the iron and steel industry. The company is the export champion of the Aegean region in the steel section products of the iron and steel industry for the years 2018, 2019, 2020, 2021, 2022 and 2023 with its foreign currency indexed sales revenue of over 550 million US Dollars and exports of nearly 400 million US Dollars. Kocael Steel is among Turkey's top 100 industrial establishments and top 50 exporters.

The company produces high-strength, special qualities, different sizes, special lengths and sections for its customers operating in the solar energy infrastructure, power transmission line, structural steel, transportation, mining, tunnel, shipbuilding, agriculture, machinery manufacturing and defense industry sectors. It carries out its sales through export, domestic and foreign distribution channels, which have a total of 20,000 sqm of closed warehouses in England and Ireland, which is the first in the sector.



Rolling Mills



A1 Plant

Production Capacity 300.000 Tons / Years	Total Area 32.500 sqm	Closed Area 21.000 sqm
Equal Angle	W Beam	H Beam
IPN	IPE	UB/UC
PFC	UPN	UPE
C	TH	K
CI 120		



A2 Plant

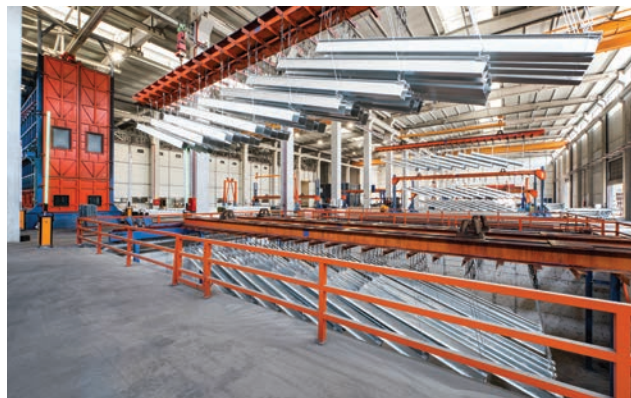
Production Capacity 300.000 Tons / Years	Total Area 186.000 sqm	Closed Area 34.000 sqm
Equal Angle	W Beam	IPN
IPE	PFC	UPN
UPE	C/CH	UAC
Flat Bar		



A3 Plant

Production Capacity 200.000 Tons / Years	Total Area 41.000 sqm	Closed Area 18.000 sqm
Equal Angle	UPN	UAC
T-Bar	Serrated Flat Bar	Rasp Bar
Flat Bar	Round Bar	Square Bar

Service Center



Kocaer Steel started to provide cut-to-length, drilling, punching, welding, sandblasting and painting, roll forming and cold forming services on steel profiles at its 180,000 tons/year capacity Service Center, as well as zinc coating services at its 100,000 tons/year capacity hot-dip Galvanizing Plant, which was commissioned in 2022.

Galvanizing Factory is one of the leading facilities in Turkey and Europe that carries out steel profile manufacturing, Service Center and galvanizing processes in an integrated structure, and is Europe's first and only LEED v4 BD+C:NC Gold certificate approved facility.

 **180.000**
Tons/Year Service Center

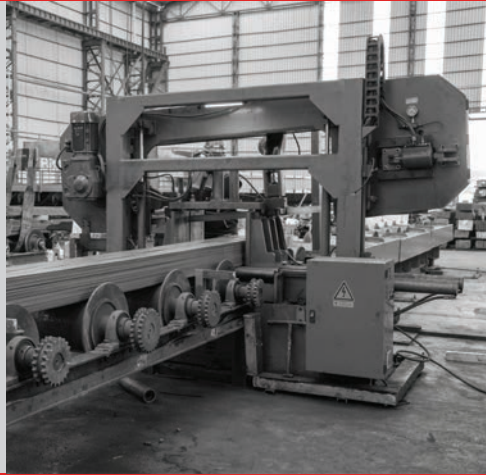
 **100.000**
Tons/Year Galvanizing

 **13.000** sqm
Closed Area

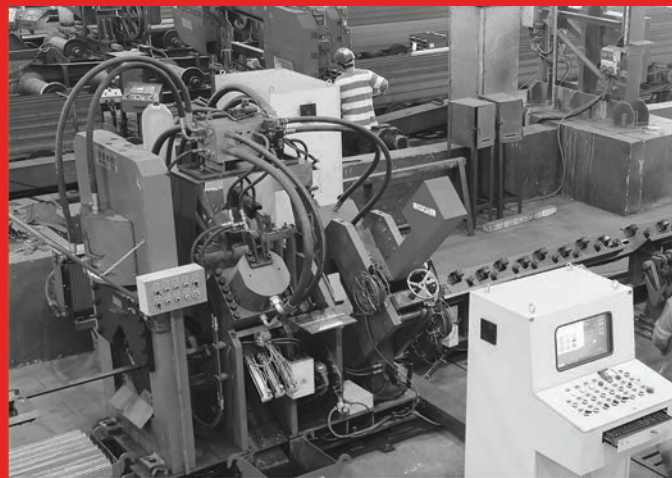
Capabilities



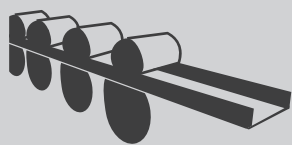
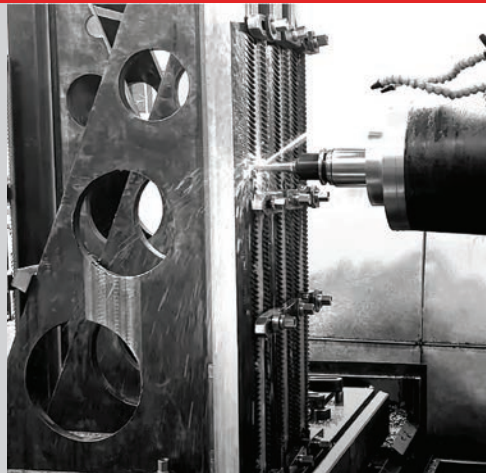
CUT TO LENGTH



FABRICATION

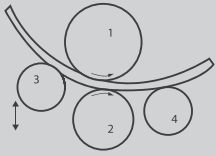


MACHINING

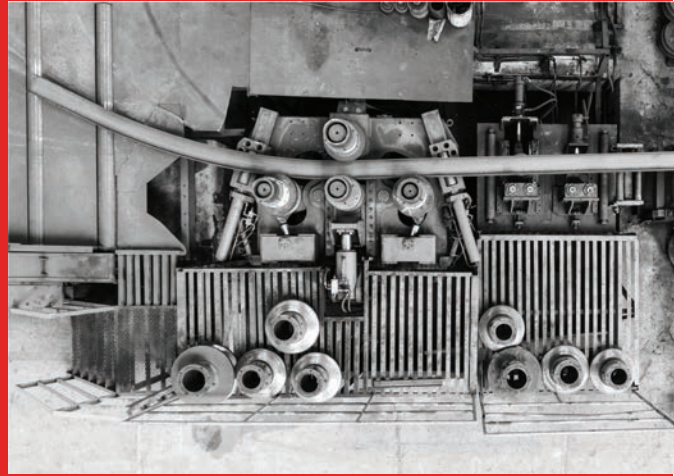


ROLL-FORMING

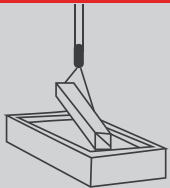




COLD BENDING



**WELDED
MANUFACTURING**



**HOT-DIP
GALVANIZING**

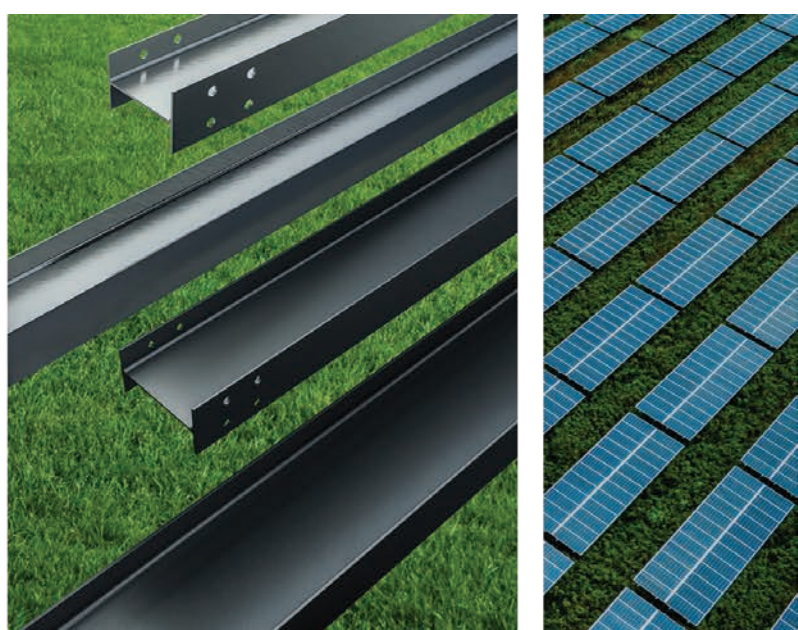


**SANDBLASTING
& PAINTING**





Solar Energy Systems



It contributes to the more widespread and sustainable use of solar energy by producing the steel construction and fasteners required for the assembly and fixing of solar panels.

Safe Installation and Long Life: It increases the efficiency of solar energy systems by ensuring a solid and long-lasting installation of solar panels.

Flexibility and Adaptability: It meets every need by offering a variety of mounting solutions suitable for different solar panel types, land conditions and tracking systems.

HOT ROLLED

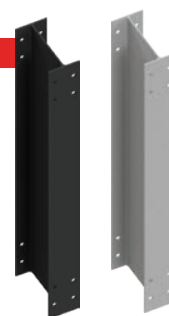
W Beam

6"

8"

10"

Production Standard : ASTM A6
Material Standard : ASTM A992 / A572
Coating Standard : ASTM A123 / EN ISO 1461



IPE / IPE-A Beam

80

100

120

140

160

180

200

220

Production Standard : EN 10034
Material Standard : EN 10025-2
Coating Standard : ASTM A123 / EN ISO 1461



COLD FORMING

C Shape

80-300 mm

Size : 80-300 mm
Height : 40-100 mm
Thickness : 2,0-4,5 mm
Coating Standard : ASTM A123 / EN ISO 1461



Lattice Towers

Kocaeli Çelik contributes to the provision of reliable and uninterrupted electricity to cities and towns by producing the steel poles, towers and connection elements required for high voltage electricity transmission.

Durability and Safety: The use of high-strength steel, resistant to even the harshest weather conditions, ensures the longevity and safety of electrical networks.

Efficiency and Cost Advantage: Optimized designs and production techniques enable projects to be completed quickly and cost-effectively.

HOT ROLLED

Equal Angle

20	25	30	35	40	45	50	55	60	65
70	75	80	90	100	110	120	130	140	150
160	180	200	250						
3/4"	7/8"	1"	1 1/4"	1 1/2"	1 3/4"	2"	2 1/4"	2 1/2"	3"
3 1/2"	4"	5"	6"	8"	10"				

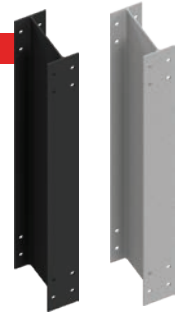


Production Standard : EN 10056-1/2 / ASTM A6 - A 6M
Material Standard : EN 10025-2 / ASTM A572
Coating Standard : ASTM A123 / EN ISO 1461

W Beam

6"	8"	10"
----	----	-----

Production Standard : ASTM A6
Material Standard : ASTM A992 / A572
Coating Standard : ASTM A123 / EN ISO 1461



H Beam

100	120	140	160	180	200
-----	-----	-----	-----	-----	-----

Production Standard : EN 10034
Material Standard : EN 10025-2
Coating Standard : ASTM A123 / EN ISO 1461



Underground Fortification Systems

It ensures the safety of mine workers and the efficient operation of mines by producing steel support systems and equipment used in mines and tunnels.

Safe Working Environment: Increases the safety of mine workers with durable steel support systems that prevent mine collapses and accidents.

Efficient Mining Operations: Steel tunnel linings and support systems contribute to more efficient operation and ventilation of mines.

Resistance to Harsh Conditions: It offers long-lasting solutions with the use of high-strength and corrosion-resistant steel that is resistant to the harsh conditions encountered in mines and tunnels.

HOT ROLLED

TH / V Profile

16 21 25 29 34 36 40

Production Standard : DIN 21530 / PH-N-84042

Material Standard : DIN 21530 / PH-N-84042



GI No 120 Profile

120

Production Standard : DIN 21530

Material Standard : DIN 21530



K Profile

21 24

Production Standard: EN 10056-1/2

Material Standard: EN 10025 -2 / E295



Traversal Junctions

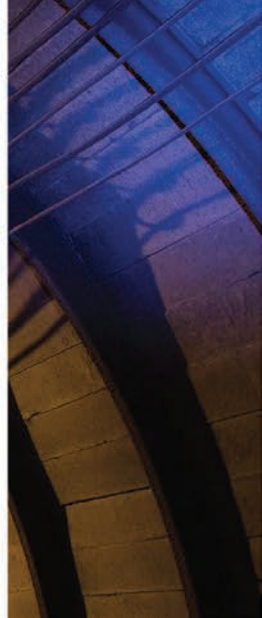
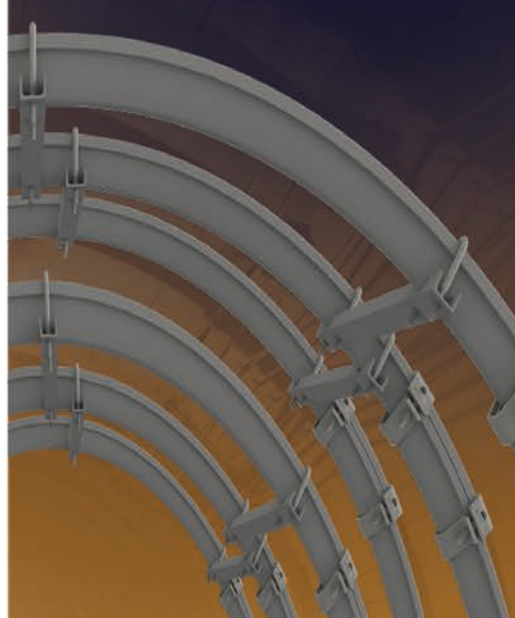
65 75 80 100 140

Production Standard : EN 10025-2

Material Standard : EN 10025-2



Underground Fortification Systems



HOT ROLLED + HOT FORGING

Clamps

21

24

25

29

34

36



Production: Upper, Lower or without notched and U-Bolt
Standard : TSE 13840

Structural Special Profiles



HOT ROLLED

Steel Strip

Production Standard: EN 10058 / DIN 59200 ASTM A6/A 6M
Length : It is produced in length and perforated shape in accordance with customer special requests.



Agricultural Special Profiles

It contributes to more efficient and sustainable agricultural activities by producing steel profiles and fasteners used in agricultural equipment, machinery and greenhouse activities.

Durable and Practical Structures: It helps protect agricultural investments by making agricultural equipment, machinery and greenhouses more robust and long-lasting.

Efficient Harvesting Systems: It contributes to more effective and efficient harvesting of agricultural lands with specially produced combine harvester rasp bar profiles.

Sustainable Agricultural Practices: It offers solutions that ensure the production of healthy agricultural products by using natural resources in the best way, with every stage controlled from production to consumption.

HOT ROLLED

||| Rasp Bar

Length : It is produced in length and perforated shape in accordance with customer special requests.



Steel Grades and Standards

GRADE	STANDARD	YIELD STRENGTH (min) (N/mm ²)	TENSILE STRENGTH (min) (N/mm ²)	ELONGATION (min) (%)
S 550 W	ZN/TT/2012/1	550	730	18
S 480 W	8PN-H-84042	480	650	17
31 Mn4	DIN 21530-3	350	550	18
17 MnV7	DIN 1.0870	450	600-700	22
S235 JR	EN 10025	235	360-510	26
S275 JR	EN 10025	275	410-560	22
S355 JR	EN 10025	355	470-630	22
E 295	ČSN EN 10025+A1	295	470-610	20

Certifications



ISO 14064-1:2018



GOLD



ISO 14046:2014



ISO 14046:2014



ISO 14046:2014



ISO 14046:2014



Scan for Sustainability Report

Turkey Addresses

Head Office

Zorlu Center Residence
Koru Sokak T3 Blok
Beşiktaş / İstanbul
+90 212 813 55 00

Izmir Office

Akdeniz Mah. Şehit Fethi Bey Cad.
No: 55 Kat: 16 Heris Tower
Alsancak - Konak / İzmir
+90 232 625 18 60

Izmir Factories (A1-A2-A3)

Yenifoca Yolu
2. ve 3. km Aliğa / İzmir
+90 232 625 18 60

Service Center

Yenifoca Yolu
2. km Aliğa / İzmir
+90 232 625 18 60

Galvanizing Facility

Yenifoca Yolu
2. km Aliğa / İzmir
+90 232 625 18 60

United Kingdom Address

Kocaer Steel UK Ltd.

3 Alexandra Gate, Ffordd,
Pengam Cardiff CF24 2UD
+44 2922 809050

Cardiff Warehouse

Cargo Road, Port of Cardiff CF10 4LY
+44 2922 809050

Kocaer Steel Ireland Ltd.

Warehouse: Shed 2 Warrenpoint Docks
BT343JR

Office: Tullyear Terrace Bandbridge
County Down BT32 3RW
+44 2036 673266

scsales@kocaersteel.com
sales@kocaersteel.com
marketing@kocaersteel.com

[f](#) /kocaersteel [@](#) /kocaersteel
[X](#) /SteelKocaer [in](#) /kocaer-steel



kocaersteel.com